

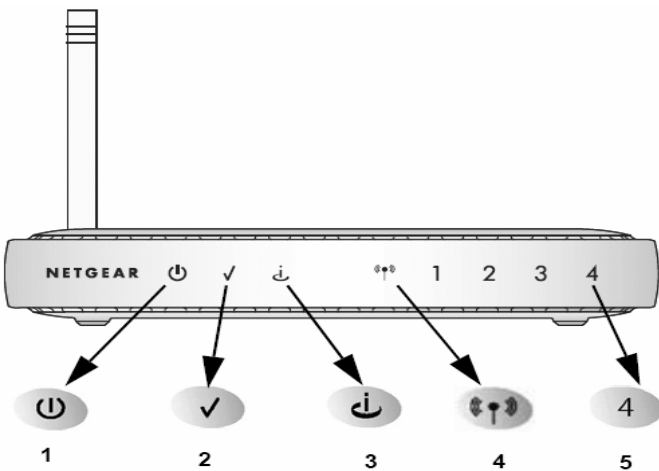
Connecting to the Internet @ 62Owen

This document outlines the procedure to connect to the Internet via Wireless or via Ethernet Cable. It assumes that your laptop or PC has either: a built-in Wireless Receiver or a PCMCIA Wireless Adapter or alternatively a built-in Network Adapter. This document does not cover configuration of these devices. You will need to consult the manufacturer's documentation for your equipment should it require configuration before use.

Internet connectivity in this apartment is provided via a wall mounted NETGEAR DG834G Wireless Modem Router. It has already been pre-configured for Internet Access, so you will only need to configure your PC or Laptop. (Please note that the unit is monitored remotely 24 hours a day and will thus raise an alarm if it is either switched off or removed).

Before You Begin

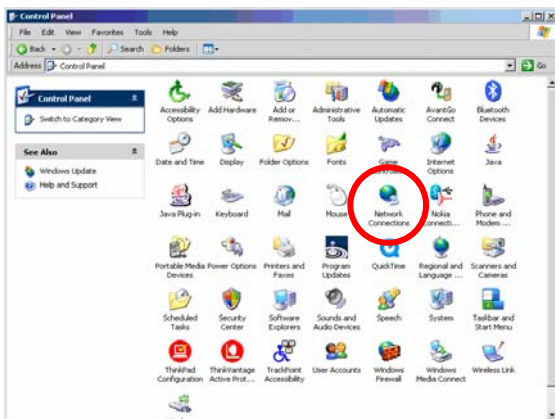
Before you begin, you will need to establish whether the modem's Internet connection is active (known as Line Sync). The modem is located in the master bedroom on the wall next to the phone.



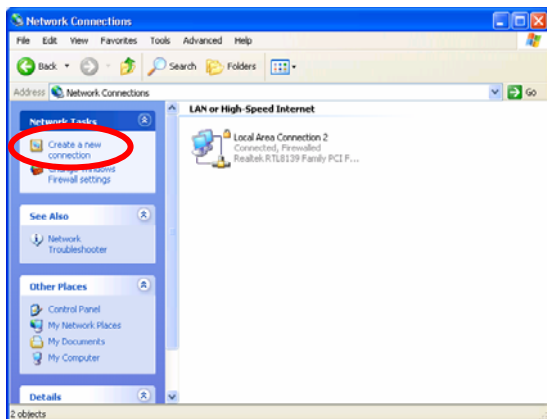
1. The unit should be left on at all times. If the device is off, then you will need to either plug in the power adapter or turn on the switch at the wall point. Once the unit has powered up wait a few moments.
2. Check that LED 2 is off.
3. Check that LED 3 is on and Green.
4. Check that LED 4 is on if you intend to connect via wireless.

Note: You may have to either adjust or disable any Anti-Virus and/or Firewall software if it prevents you from successfully establishing an Internet Connection after following the steps in this connection guide. Please consult your vendor's documentation if such is the case.

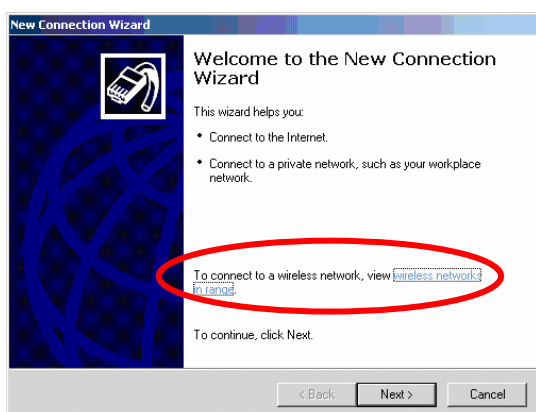
Connecting via Wireless



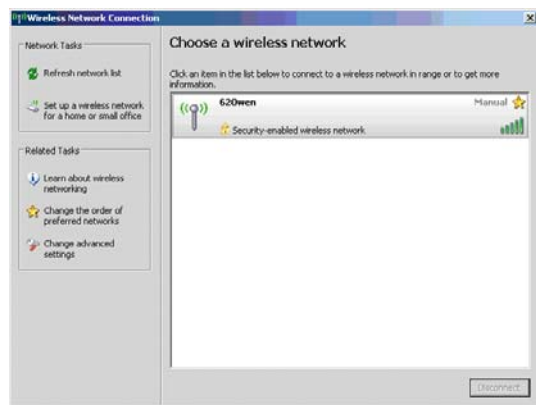
1. On your computer, click on the Start button and select the **Control Panel**.
2. Double-click on the **Network Connections** icon (shown circled) to display the Network Connections window.



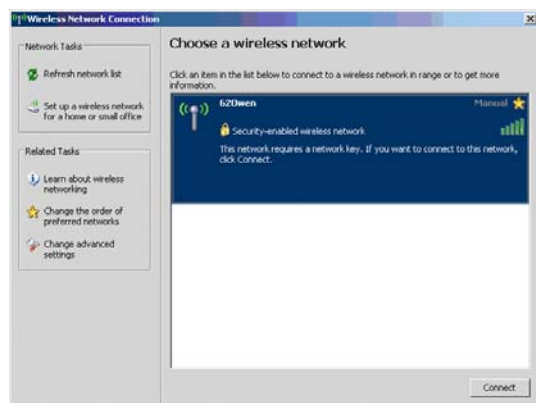
3. Click on the **Create a new connection** icon (shown circled) in the Network Tasks section (left hand side of the Network Connections window) to begin the New Connection Wizard.



4. On the first screen of the New Connection Window click the **'wireless networks in range'** link to display the Wireless Network Connection window.

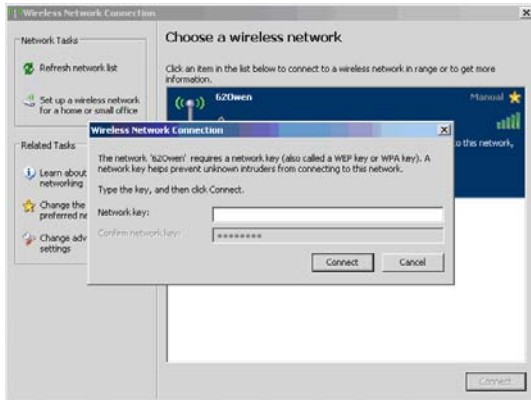


5. The 62Owen wireless network should appear in the list. Click on the **62Owen** network from the list and then click the **Connect** button in the lower right corner of the window.



6. You will be presented with a dialog box prompting you to enter the Network Key to connect to the 62Owen wireless network.

Connecting to the Internet @ 62Owen

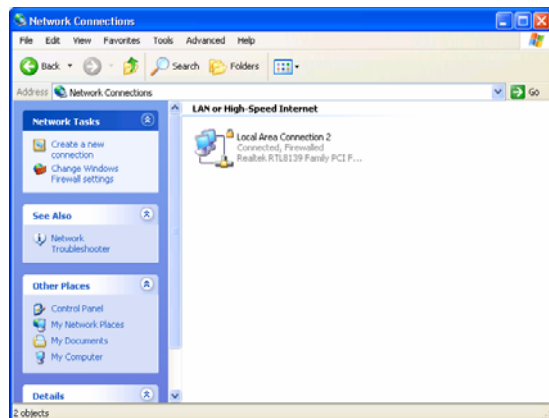


7. Enter the Network key in the space provided and then click the **Connect** button.
8. You can now begin surfing the Internet.

Connecting to the Internet @ 62Owen

Connecting via Network Cable

If you do not have the correct hardware for connecting via Wireless you can still connect to the internet using an ethernet network cable. One is provided for your convenience (grey cable) and should already be plugged into a free port in the back of the NETGEAR Wireless Router. Your laptop will need to have a working Network Adapter in order to connect using this method.



1. Insert the free end of the network cable into the port of your network card.
2. On your computer, click on the Start menu and select the Control Panel.
3. Double-Click on the **Network Connections** icon to display the Network Connections window.

4. Double-click on your **LAN or High Speed Internet** icon to display the **Local Area Connection Status** page (Figure 1).

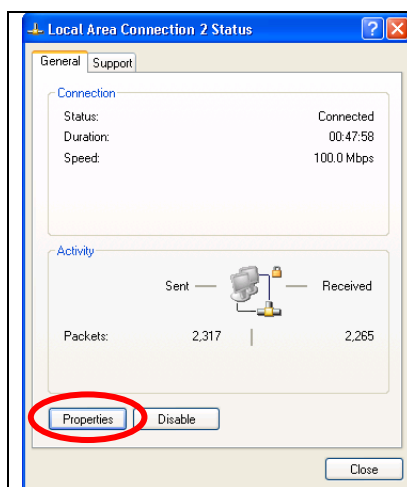


Figure 1

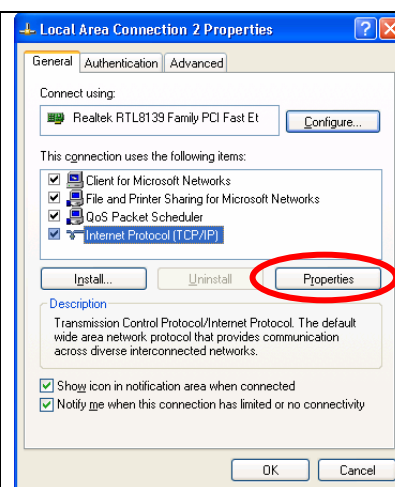


Figure 2

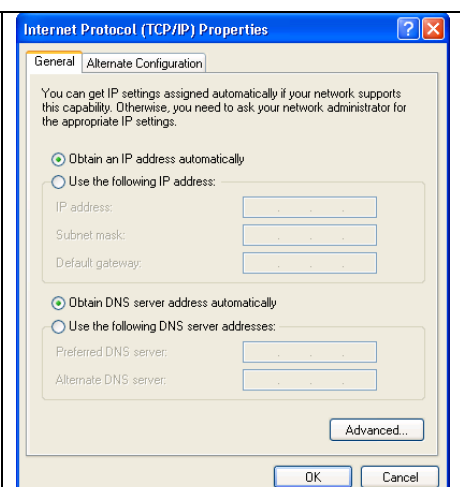


Figure 3

5. Click the **Properties** button on the page to display the **Local Area Connection Properties** page (Figure 2).
6. Click on the **Internet Protocol (TCP/IP)** entry from the list (shown highlighted) and then click the **Properties** button below it (shown circled) to display the current TCP/IP Settings.
7. Set the following options on the **TCP/IP Properties** page (Figure 3) and then click the OK button:
 - Obtain an IP address automatically
 - Obtain DNS server address automatically
8. You can now begin surfing the Internet.